

# Multilink® N

Placement of glass ceramic restorations, metal, metal-ceramic, zirconia and indirect composite restorations (Inlays, onlays, crowns, bridges, posts)

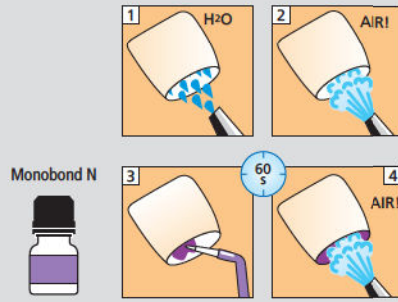


## Restoration

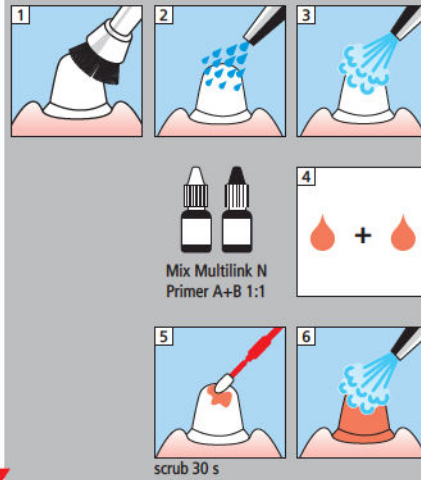
**Pre-treatment of ceramic restorations:**  
According to manufacturer's instructions.  
E.g. IPS Empress Esthetic: Etch for 60 s  
IPS e.max CAD / Press: Etch for 20 s  
with IPS Ceramic etching gel (hydrofluoric acid). Follow safety instructions.

**Pre-treatment of metal, metal-ceramic and zirconia restorations:**  
According to manufacturer's instructions.  
E.g. IPS 99: Blast with  $Al_2O_3$  100  $\mu m$ , 1 bar  
IPS e.max ZirCAD: Blast with  $Al_2O_3$  100  $\mu m$ , 1 bar

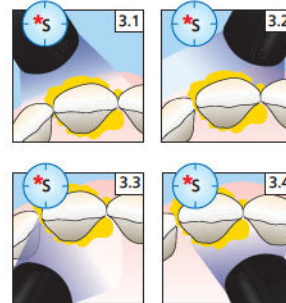
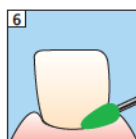
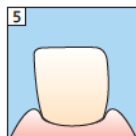
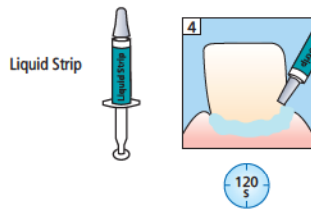
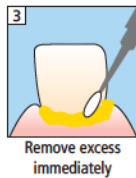
**Pre-treatment of composite restorations:**  
According to manufacturer's instructions.  
E.g. SR Nexco: Blast with  $Al_2O_3$  100  $\mu m$ , 2 bar



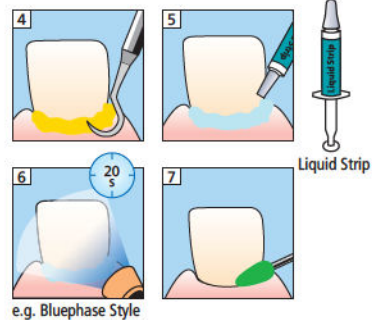
## Dentin/Enamel



Secure the restoration



* Light intensity	Exposure time per quarter segment	
Indicated for cases with up to 2 bridge abutments = 3 to 4-unit bridges		
approx. 650 mW/cm <sup>2</sup>	3 s	e.g. Bluephase in LOW POWER mode
approx. 1.000 mW/cm <sup>2</sup>	1-2 s	e.g. Bluephase Style or Bluephase in HIGH POWER mode
Indicated for cases with up to 6 bridge abutments = circular bridges		
approx. 650 mW/cm <sup>2</sup>	1 s	e.g. Bluephase in LOW POWER mode



649584/2013-02-18/rev. 0